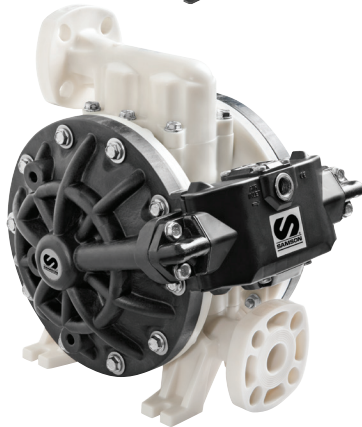
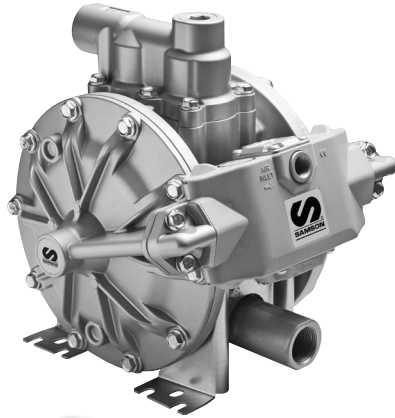


Diaphragm Pumps



DP200 Pump 53 GAL/MIN

- Frictionless pivoting air valves
- Bolted cover design
- Long life diaphragms
- In-line design
- Quiet operation
- No pulsation
- Smooth flow

TECHNICAL SPECIFICATIONS

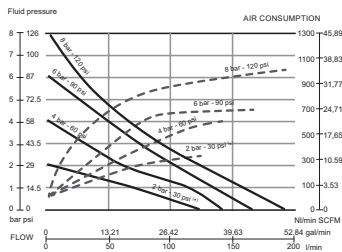
Pump ratio	1:1
Maximum free delivery	53 gal/min (200 l/min)
Maximum suction lift	26' (8 m)
Minimum air pressure	22 (1.5 bar)
Maximum air pressure	115 psi (8 bar)
Max size solid suspension	1/4" (6 mm)
Air inlet	3/8" NSP(F)
Fluid outlet	1" NPT(F) (555 030) 1" ANSI B16.5 150 lb flange (555 164)
Wetted materials	Aluminum / Hytel / Acetal / Buna-N / Polypropylene
Mounting Footprint	Poly 6 1/16" x 6 57/64" Metal 5 25/64" x 5 33/64"
Manual	855 833

MARKETS SERVED

- Car and truck dealers
- Service shops
- Industrial
- Agriculture
- Lube trucks
- Mining and construction
- Railroad and mass transit

FLUIDS HANDLED

- Antifreeze and antifreeze solutions
- DEF
- Lubricants
- Used oil
- Used fluid
- Diesel
- Windshield wash solutions



(*) 2 bar test with a PTFE (Teflon®) diaphragm pump.

Tested at room temperature, with water and flooded pump with 31.5" (800 mm) height of water above the pump inlet.

ORDER INFORMATION

	Pump body	Diaphragms	Balls	Seats	Application
NPT PORT for use with lubricants, diesel, used oil evacuation and transfer					
555 030	Aluminum	Buna-N	Acetal	Buna-N	AF, D, L, WO, WF
FLANGE PORT					
555 164	Polypropylene	Hytel®	PTFE	Polypropylene	AF, WWS, WF, DEF
FLANGE CONNECTION KIT					
1940	Flange connection kit - for use with 555 164 Order 1 per pump - kit includes 2 flanges				



362 921 Air Connection Kit

Air nipple 3/8" NPT(M)	936M06
Air coupler 3/8" NPT(F)	935F06
Air hose 3/8" x 5'	815
Air pressure regulator 3/8"	973
Connection adaptor 3/8" NPT(M)	2035
Air valve 1/2" NPT(F)	2088